

Slimline / Vogue Cord & Chain System VERTICAL BLINDS

FITTING GUIDE

Tools Required



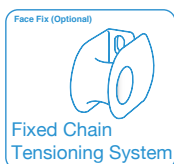
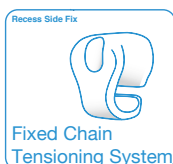
Child Safety

Young children can be strangled by loops in pull cords, chains, tapes and inner cords that operate the product. To avoid strangulation and entanglement, keep cords out of the reach of young children. Cords may become wrapped around a child's neck. Move beds, cots and furniture away from window covering cords. Do not tie cords together. Make sure cords do not twist and create a loop.



Safety Device

This product has been supplied with a fixed chain/cord tensioning system. These components should be installed correctly and have been supplied to make this blind safe in line with the new child safety regulations outlined in BS EN13120. In order to comply with BS EN13120 the fixed retaining device provided with this blind should be installed at the maximum distance possible from the control mechanism to prevent the looped pull cords/chain becoming slacks.

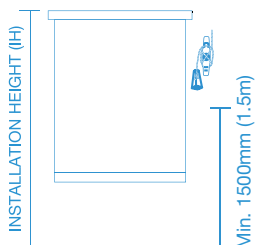


Fitting The Safety Device

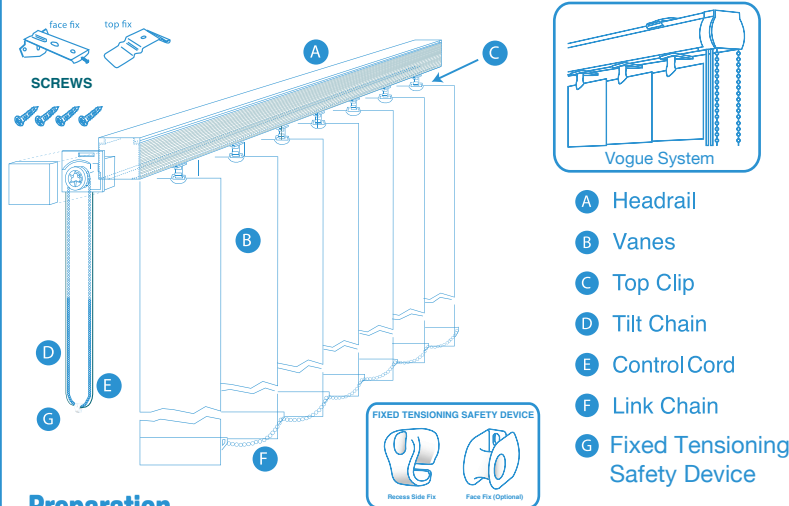
- Ensure length of operating chain is in compliance with BS EN13120 and the fixed retaining device together with chain should be fitted a minimum of 1500mm (1.5m) from the floor.
1. Position the fixed tensioning device with chain through the hook at maximum distance possible from the control mechanism and mark hole position on substrate. Make sure the chain is fully taut vertically.
 2. Drill pilot hole and screw device into position. Use applicable wall plugs if required. For the face fix version of, you will need to two holes.
 3. Ensure the distance between the two strands of the loop is not more than 50mm at the point of exit from the device.

WARNING

Children can strangle if this safety device is not installed. Always use this device to keep cords or chains out of reach of children.

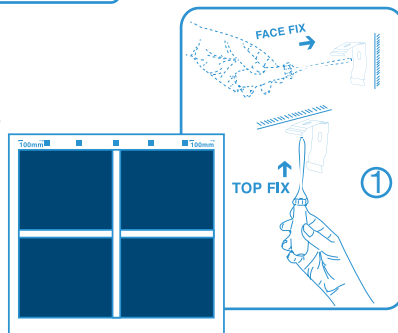


Vertical - Slimline / Vogue Cord & Chain System



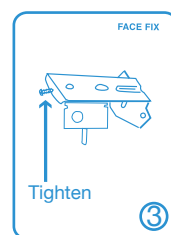
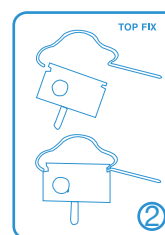
Preparation

1. Confirm the location of the brackets on the window, options are: Top fix or face fix as shown in Fig.1.
2. Ensure a minimum distance of 50mm (2") is kept from the window frame or any obstructing handles for 89mm vane sizes. For 127mm vane sizes, a minimum distance of 75mm (3") is required.
3. Mark with a pencil where the brackets are to be fixed. Fix the first two brackets 100mm from either end of the window frame and spread the remainder of the brackets supplied evenly across the width of the window.



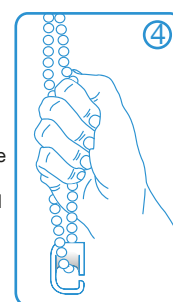
Fitting The Blind

- 1A. Top Fix Brackets - After fixing the brackets into place, hook the front ridge of the headrail into the front of the top clip, then push the rail up until the back ridge slides in and clips to the back of the top clip. See Fig.2
- 1B. Face Fix Brackets - Hook the back ridge of the headrail into place first and then push the head rail into place at the front of the bracket and tighten the front screw to secure the headrail. See Fig.3
2. Hanging The Louvres - Pull on the control cord (E) to draw the carriers across the width of the rail and then use the tilt chain (D) to tilt the carriers so that the clips are facing either to the left or right before hanging the louvres onto the carriers. Please Note: if the louvres are hung onto the carrier whilst the clip of the carriers are facing either to the front or the back of the window, then the tilt mechanism will lock.
3. Install the Fixed Tensioning Safety Device at least 1500mm (1.5m) from the floor to ensure the blind is fitted as per the new child safety legislation. (See Child Safety Section)



Operating Your Blind

Pulling the Cord Control will allow your blind to open and close subject to the stack configuration ordered. To tilt the vanes, pull the Control Chain until the desired shading level is achieved. See Fig.4



To Remove The Blind For Cleaning

Remove the vanes by tilting the top-clips attached to the vanes upwards. Fabric vanes can be sponge cleaned and should not be washed at any time. The headrail can be removed by unscrewing the face fix screw or pressing the release tab on the top-fix bracket.