

FITTING GUIDE

Tools Required



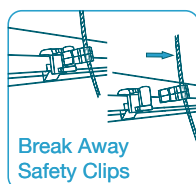
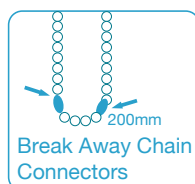
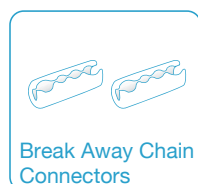
Child Safety



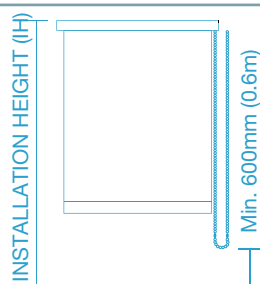
Young children can be strangled by loops in pull cords, chains, tapes and inner cords that operate the product. To avoid strangulation and entanglement, keep cords out of the reach of young children. Cords may become wrapped around a child's neck. Move beds, cots and furniture away from window covering cords. Do not tie cords together. Make sure cords do not twist and create a loop.

Safety Device

This product has been supplied with a chain system with two breakaway connectors that have been positioned 200mm apart and break away safety clips attached to each cord on the reverse of this blind. This will make this blind safe in line with the new child safety regulations outlined in BS EN13120. The chain break connector allows the chain to break apart if any reasonable force is placed in the loop. The connector only works when in the vertical position, for this reason, the two breakaway connectors have been fitted.



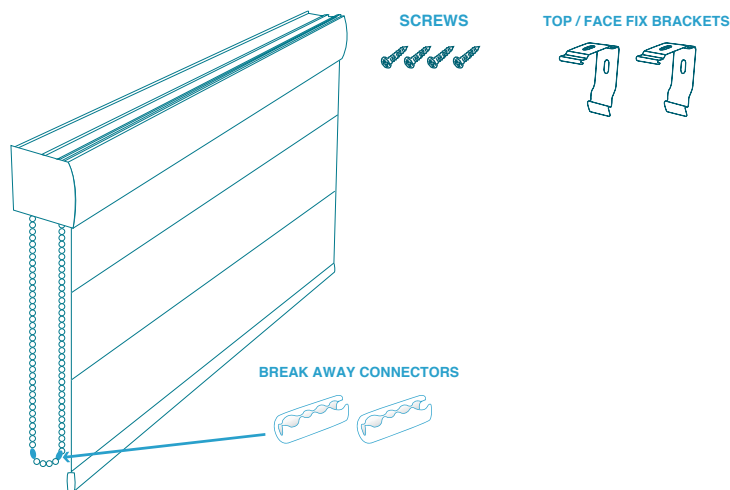
In order to comply with BS EN13120 the chain on this blind with two breakaway connectors must be fitted a minimum of 600mm (0.6m) from the floor. The break away safety clips that are attached to each panel and cord on the reverse of the blind will break away from the front of the clip if any reasonable weight is placed on the cord on the back of the blind. Our clips will break away leaving one side of the clip on the tape and the other on the cord.



WARNING

Children can strangle if this safety device is not installed. Always use this device to keep cords or chains out of reach of children.

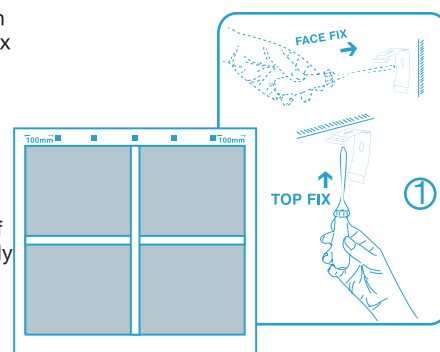
Roman Cassette System 32 - Chain



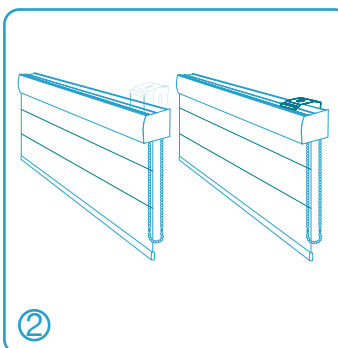
Preparation

1. Confirm the location of the brackets on the window, options are: Top fix or face fix as shown in Fig.1.

2. Mark with a pencil where the brackets are to be fixed. The first two brackets should be placed as close to the ends of the blind as possible, ensuring that the brackets avoid the control mechanism. Larger blinds will require the remainder of the brackets supplied to be spaced evenly throughout the width of the head rail to ensure sufficient support.



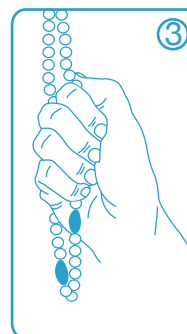
Fitting The Blind



1. Install brackets firmly into place, use raw plugs where necessary to ensure brackets are securely fitted.
2. Hook the front ridge of the headrail into the front of the top clip. See Fig.2
3. Push the cassette up until the back ridge slides in and clips to the back of the top clip.
4. The headrail should snap into place.
5. Repeat until all brackets have been secured onto the rail
6. The control chain has been supplied with two breakaway connectors, ensure that the chain length is a minimum of 600mm (0.6m) from the floor.

Operating Your Blind

1. To allow your blind to raise or fall, pull the chain and adjust blind to desired level. See Fig 3
Please ensure you do not continue pulling the chain once the blind is fully retracted as this will damage the rail and will not allow the blind to operate correctly.



To Remove The Blind For Cleaning

If you need to remove the blind from the brackets, press the release tab at the bottom of each bracket and tilt the headrail backwards. See Fig.4

